



A wholesaler's **GivEnergy** kit guide

What to sell to installers as part of a typical system

What comprises a typical GivEnergy system?

1. The inverter The computer that makes everything smart.

VARIANTS



AC coupled inverter



Hybrid inverter single-phase



Hybrid inverter 3-phase

2. The battery The energy storage component.

VARIANTS



2.6kWh



5.2kWh



5.12kWh



8.2kWh



9.5kWh



All in One 13.5kWh



HV stackable 10.2 kWh



HV stackable 13.6 kWh



HV stackable 17.0 kWh



HV stackable 20.4 kWh

3. The cables

What you'll need to connect the inverter and battery.

VARIANTS



Lug to lug



Lug to plug

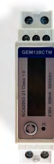


Plug to plug

4. The meter

To collect data and provide monitoring points.

VARIANTS



GEM120



GEM630

5. The accessories

Gadgets you may need to add to the system conditionally.

VARIANTS



Dongle (WiFi or 4G)



DC isolator



LoRA

6. The upsells

Optional opportunities to increase project value.

VARIANTS



EV charger



Giv-Gateway (All in One backup)



String (solar only) inverter

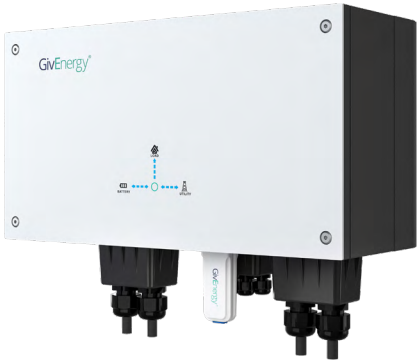


Voltage optimiser



Smart plug

Kit compatibility guide



AC coupled inverter 3.0

A battery-only inverter. (Great for adding a battery to an existing solar PV setup that already has a solar inverter included – or for standalone battery installations where a solar inverter isn’t required.)

GENERATION 1

BATTERY PAIRING

Any low-voltage battery



REQUIRED CABLE



Lug to lug
When connecting the inverter to an older battery (2.6, 5.2, 8.2)



Lug to plug
When connecting the inverter to a newer battery (5.12, 9.5)

REQUIRED ACCESSORIES



GivEnergy dongle



GEM120 meter



DC isolator
When connecting the inverter to an older battery (2.6, 5.2, 8.2)



Hybrid inverter Single phase 3.6kW | 5.2kW

A battery plus solar inverter in one unit. (Great for current and future solar plus storage projects.)

GENERATION 1 + 2

BATTERY PAIRING



Any low-voltage battery

REQUIRED CABLE



Lug to lug
When connecting the inverter to an older battery (2.6, 5.2, 8.2)



Plug to lug
When connecting an older inverter to a newer battery (5.12, 9.5)



Plug to lug
When connecting the new inverter to an older battery (2.6, 5.2, 8.2)



Plug to plug
When connecting the new inverter to a new battery (5.12, 9.5)

REQUIRED ACCESSORIES



GEM120 meter



GivEnergy dongle



DC isolator
When connecting the inverter to an older battery (2.6, 5.2, 8.2)



DC isolator
When connecting the inverter to an older battery (2.6, 5.2, 8.2)



Hybrid inverter three phase 11kW | 20kW

A battery plus solar inverter in one unit.
(Great for current and future solar plus storage projects.)

GENERATION 3

BATTERY PAIRING

Any high-voltage stackable GivEnergy battery



REQUIRED CABLE



Plug to plug

REQUIRED ACCESSORIES



GEM630 meter

FAQ

How does the GivEnergy All in One fit into this picture?

As the name suggests, our All in One is a single unit comprising the battery and inverter components together. Plus, as with all our newest batteries, it also comes with inbuilt DC isolator.

This means you don't need to package the AIO up with cables. You'd just sell the unit itself, along with a GEM120 meter. You can also (optionally) upsell with the backup Giv-Gateway, and any other smaller accessories.

Will the cables come included in the box?

The cable for our high-voltage stackable batteries is included in the box.

Meanwhile, for all single phase systems, cables are purchased separately to the core kit. So, the installer will typically need at least one as part of their order. (Or more for a parallel setup.)

What about the meters and other accessories?

As with cables, meters and other accessories are all sold separately. While accessories such as an EV charger, smart plug, voltage optimiser, etc., are entirely optional – the installer will generally require a meter as part of their order.

How often are new generations released?

The R&D of new generations varies based on demand and customer feedback. As we've introduced more and more continually improved products to our range, we've also looked to streamline.

So, from a wholesaler perspective, this means that even as we add new generations in future, we're now progressing using the same cabling systems and meters. Ever-improved products, less compatibility nuance!



Work with the best in the energy management business

GivEnergy HQ
Osprey House, Brymbo Rd
Newcastle
ST5 9HX

www.givenergy.co.uk

01377 252 874

