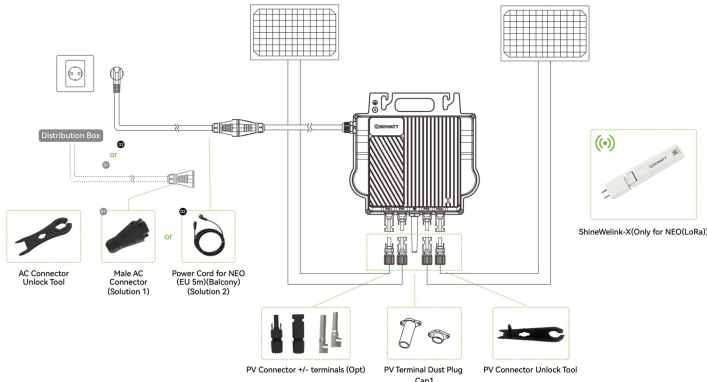


# GROWATT MICROINVERTER CONFIGURATION QUICK CHECK LIST

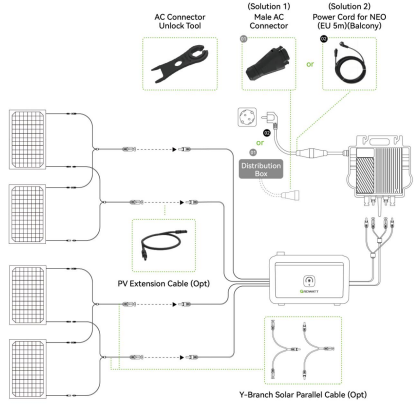
## Single System on Balcony / Roof

System

SINGLE SYSTEM WITHOUT BATTERY



SINGLE SYSTEM WITH BATTERY



Scenario	Balcony without battery	Balcony with battery	Balcony/Rooftop without battery	Balcony with battery
Microinverter	NEO 600/800/1000M-X(WF)		NEO 600/800/1000M-X(LoRa)	
Battery & Capacity	NA	1-4 pcs NOAH 2000 (2-8kWh)	NA	1-4 pcs NOAH 2000 (2-8kWh)
Connection from microinverter to grid (Choose 1 of 2)	Solution 1 Solution 2		Male AC Connector + AC cable (Client self-supply) Power Cord for NEO (EU 5m)	
Datalogger	WIFI integrated		ShineWeLink (up to 5 devices)	
Cable for extension of PV (Opt)			Y-Branch Solar Parallel Cable	
Extension Cable from panel to microinverter/battery (Opt)			PV Extension Cable (1m)	
Replacement of PV Connector (Opt)			PV Connector (Including PV +/- Connectors)	
Cap1 (Integrated)			PV terminal dust plug	

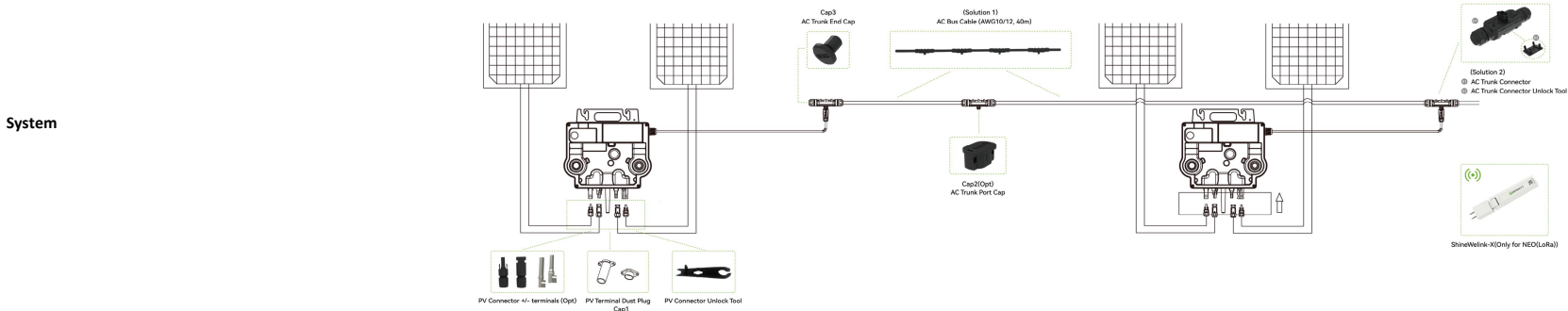
Connector Unlock Tool (Opt)	PV Connector Unlock Tool		AC Connector Unlock Tool PV Connector Unlock Tool	
-----------------------------	--------------------------	--	--	--

Configuration formula	Balcony without battery	Balcony with battery	Balcony/Rooftop without battery	Balcony with battery
	1-2pcs Panels: 1pcs 【Power Cord for NEO】 /1pcs 【Male AC Connector】	<p><b>N=1</b> 1-2pcs Panels: Npcs 【NOAH 2000】 + 1pcs 【Power Cord for NEO】 /1pcs 【Male AC Connector】</p> <p>3pcs Panels: Npcs 【NOAH 2000】 + 1pcs 【Power Cord for NEO】 /1pcs 【Male AC Connector】 +1pcs 【Y-Branch Solar Parallel Cable】</p> <p>4pcs Panels: Npcs 【NOAH 2000】 + 1pcs 【Power Cord for NEO】 /1pcs 【Male AC Connector】 +2pcs 【Y-Branch Solar Parallel Cable】</p> <p>1&lt;N≤4 1-4pcs Panels: Npcs 【NOAH 2000】 + 1pcs 【Power Cord for NEO】 /1pcs 【Male AC Connector】</p>	1-2pcs Panels: 1pcs 【Power Cord for NEO】 /1pcs 【Male AC Connector】 +1pcs 【ShineWeLink】	<p><b>N=1</b> 1-2pcs Panels: Npcs 【NOAH 2000】 + 1pcs 【Power Cord for NEO】 /1pcs 【Male AC Connector】 +1pcs 【ShineWeLink】</p> <p>3pcs Panels: Npcs 【NOAH 2000】 + 1pcs 【Power Cord for NEO】 /1pcs 【Male AC Connector】 +1pcs 【Y-Branch Solar Parallel Cable】 +1pcs 【ShineWeLink】</p> <p>4pcs Panels: Npcs 【NOAH 2000】 + 1pcs 【Power Cord for NEO】 /1pcs 【Male AC Connector】 +2pcs 【Y-Branch Solar Parallel Cable】 +1pcs 【ShineWeLink】</p> <p>1&lt;N≤4 1-4pcs Panels: Npcs 【NOAH 2000】 + 1pcs 【Power Cord for NEO】 /1pcs 【Male AC Connector】 +1pcs 【ShineWeLink】</p>

# GROWATT MICROINVERTER CONFIGURATION QUICK CHECK LIST

## Multiple System on Roof

### MULTIPLE SYSTEM WITHOUT BATTERY



Microinverter	NEO 600/800/1000M-X(LoRa)
Connection from microinverter to grid (Choose 1 of 2)	<p><b>Solution 1</b> AC Bus Cable (AWG 10, 40A) / AC Bus Cable (AWG 12, 30A) (Including 20pcs AC Trunk Connectors, 40m)</p> <p><b>Solution 2</b> AC Trunk Connector + AC cable (Client self-supply)</p>
Datalogger	ShineWeLink (up to 5 devices)
Extension Cable from panel to micinverter/battery (Opt)	PV Extension Cable (1m)
Replacement of PV Connector (Opt)	PV Connector (Including PV +/- Connectors)
Cap1 (Integrated)	PV terminal dust plug
Cap2 (opt)	AC Trunk Port Cap
Cap3	AC Trunk End Cap
Connector Unlock Tool (Opt)	AC Connector Unlock Tool PV Connector Unlock Tool AC Trunk Connector Unlock Tool

**Configuration formula**

- 2-5pcs 【NEO 1000M-X(LoRa)】 :**
- ① 1pcs 【AC Bus Cable (AWG 12/10)】 + 1pcs 【ShineWeLink】 + 1pcs 【AC Trunk End Cap】
  - ② 2-5pcs 【AC Trunk Connector】 + 1pcs 【ShineWeLink】 + 1pcs 【AC Trunk End Cap】